


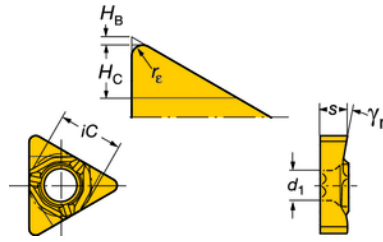
CoroThread® 266

Blanks


Dimensions, mm (inch)

	iC	mm	Pitch, TPI	iC mm	d ₁	s
16	3/8	0.2 - 3.0	64-8	9.53	4.4 (.173)	3.97 (.156)


Dimension $H_C \times l_a$ is grinding area for specific profiles



External


Dimensions, millimeter, inch (mm, in.)											P	M	K	N	S
	iC	Ordering code	H _B mm	H _B in.	H _C mm	H _C in.	r _E mm	r _E in.	γ _n		H13A	H13A	H13A	H13A	H13A
16	3/8	266R/LG-160000-300-BG	0.70	.0276	3.20	.1260	1.00	.0394	10°		☆	☆	☆	☆	☆
											M25	K20	N25	S25	

Internal

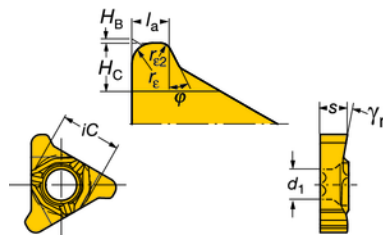
Dimensions, millimeter, inch (mm, in.)											P	M	K	N	S
	iC	Ordering code	H _B mm	H _B in.	H _C mm	H _C in.	r _E mm	r _E in.	γ _n		H13A	H13A	H13A	H13A	H13A
16	3/8	266R/LL-160000-300-BG	0.70	.0276	2.70	.1063	1.00	.0394	15°		☆	☆	☆	☆	☆
											M25	K20	N25	S25	

266R = Right hand
★ = First choice


Dimensions, mm (inch)

	iC	mm	Pitch, TPI	iC mm	d ₁	s
22	1/2	3.0-6.0	8-4	12.7	5.5 (.217)	5.57 (.219)
27	5/8	6.0-8.0	4-3	15.88	6.5 (.256)	7.0 (.276)


Dimension $H_C \times l_a$ is grinding area for specific profiles



External

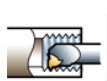
Dimensions, millimeter, inch (mm, in.)													P	M	K	N	S	
	iC	Ordering code	H _B mm	H _B in.	H _C mm	H _C in.	r _E mm	r _E in.	r _{E2} mm	r _{E2} in.	l _a mm	l _a in.	γ _n	H13A	H13A	H13A	H13A	H13A
22	1/2	266R/LG-220000-600-BG	0.30	.0118	4.80	.1890	2.00	.0787	1.00	.039	3.50	.138	10°	☆	☆	☆	☆	☆
27	5/8	266RG-270000-800-BG	0.30	.0118	5.80	.2283	2.00	.0787	1.00	.039	6.50	.256	10°	☆	☆	☆	☆	☆
														M25	K20	N25	S25	

Internal

Dimensions, millimeter, inch (mm, in.)													P	M	K	N	S	
	iC	Ordering code	H _B mm	H _B in.	H _C mm	H _C in.	r _E mm	r _E in.	r _{E2} mm	r _{E2} in.	l _a mm	l _a in.	γ _n	H13A	H13A	H13A	H13A	H13A
22	1/2	266R/LL-220000-600-BG	0.40	.0157	4.80	.1890	2.00	.0787	1.00	.039	3.50	.138	15°	☆	☆	☆	☆	☆
27	5/8	266RL-270000-800-BG	0.30	.0118	5.80	.2283	2.00	.0787	1.00	.039	6.50	.256	10°	☆	☆	☆	☆	☆
														M25	K20	N25	S25	

266R = Right hand
★ = First choice

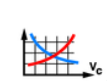
Note: Precaution should be taken when grinding cemented carbide products. See page J7 for safety information.



C8



C7



C82



C86



C2



J3



I8