



HIGH EFFICIENCY CYCLONIC DUST COLLECTION SYSTEM

- **Cyclonic action**
separates the heavier chips and particles and disposes of them into the 55-gallon drum
- **Large 8-fin, 14-in. steel impeller**
creates high velocity air flow, lets lighter dust particles pass through and be trapped in the filter
- **Filter bag**
provides almost 40 sq. ft. of filtration surface area of all particles 5 microns or larger
- **Collection bag has "snap-in" design**
for quick, easy installation and removal
- **EXCLUSIVE pressure tube**
allows use of a plastic collection bag in the drum without getting sucked into the cyclone
- **Special rectangular inlet pipe**
for added separation and additional air flow
- **Steel construction with welded seams and powder-coated paint**
ensures long, dependable performance
- **3HP motor is totally enclosed and fan-cooled**
to keep dust and contaminants out

STOCK NUMBER	708653K	708654K
Model	JC-3BF	JC-3CF
Impeller diameter (in.)	14	14
Impeller fins	8	8
Impeller material	Steel	Steel
Air inlet (in.)	8	8
Air outlet (in.)	8	8
Separator tank diameter (in.)	19-1/2	19-1/2
Separator tank height (in.)	17-3/8	17-3/8
Filter (dia. x H/in.)	20 x 90-1/2	20 x 59-1/2
Filter Specifications/Filtration	99% @ 5 micron / 39.64 sq. ft.	99% @ 2 micron / 130 sq. ft.
Max. Air Flow w/Filters (CFM)	1450	1450
Max. Static Pressure (in. of water)	12.12	12.12
Sound Rating @ 3 ft.	80 dB	80 dB
Overall Dimension (L x W x H/in.)	67-3/4 x 45-3/8 x 111	67-3/4 x 45-3/8 x 111
Motor	3HP, 1Ph, 230V	3HP, 1Ph, 230V
Net Weight (lbs.)	257	280



OPTIONAL ACCESSORIES See pages 55-63 for details

- 
2-Micron Canister Filter
708655
- 
5-Micron Filter Bag
708654
- 
Dust Collection Hose
PAGE 59
- 
Plastic Dust Collection Components
PAGES 56-59
- 
Steel Dust Collection Components
PAGE 60-63



MODEL 1200 DUST COLLECTORS

- **Industrial-quality construction** effectively handles collection of wood chips and sawdust
- **Single-stage design** for economical and quiet operation
- **Industrial controls** designed for years of trouble-free use
- **Quick-connect collection bags with elastic band** for fast, easy installation and removal
- **High air velocity (CFM) design** stands up to any competitive specifications
- **Permanently lubricated, totally enclosed, fan-cooled motors** are rated for continuous-duty
- **Includes four casters** for maneuverability and total portability
- **Remote Control is programmable from 1 to 99 minutes** to collect dust even while you are away from your workshop

STOCK NUMBER	708634	708635	708634RC	708634CK	708635RCK
Model	DC-1200A	DC-1200A-3	DC-1200RC	DC-1200CK	DC-1200RCK
Remote Control	no	no	yes	no	yes
Blower Wheel dia.	12	12	12	12	12
Sound Rating @ 3 ft.	65-80 dB	65-80 dB	65-80 dB	65-80 dB	65-80 dB
1-Hose Connect. dia.	6	6	6	6	6
2-Hose Connect. dia.	4	4	4	4	4
Bag dia.	20	20	20	20	20
Filter Bag/ Canister length	46	46	46	26	26
Collection Bag length	34-1/2	34-1/2	34-1/2	34-1/2	34-1/2
Collection Bag Cap.	7.36 cu. ft.	7.36 cu. ft.	7.36 cu. ft.	7.36 cu. ft.	7.36 cu. ft.
Air Flow @ 4" (CFM)	1200	1200	1200	1200	1200
Particle Size	30-Mic.	30-Mic.	30-Mic.	2-Mic.	2-Mic.
Static Pressure (in. of water)	11.0	11.0	11.0	11.0	11.0
Velocity @ 4" (FPM)	13,745	13,745	13,745	13,745	13,745
Overall dim. (L x W x H/in.)	34x20.5x96	34x20.5x96	34x20.5x96	34x20x72	34x20x72
Motor (TEFC)	2HP, 1Ph, 230V	2HP, 3Ph, 230/460V, prewired 230V	2HP, 1Ph, 230V	2HP, 1Ph, 230V	2HP, 1Ph, 230V
Net Wt. (lbs.)	143	153	143	150	150

OPTIONAL ACCESSORIES See pages 55-63 for details



MODEL 1100 DUST COLLECTORS

- **Industrial-quality construction** effectively handles collection of wood chips and sawdust
- **Single-stage design** for economical and quiet operation
- **Industrial controls** designed for years of trouble-free use
- **Quick-connect collection bags with elastic band** for fast, easy installation and removal
- **High air velocity (CFM) design** stands up to any competitive specifications
- **Permanently lubricated, totally enclosed, fan-cooled motors** are rated for continuous-duty
- **Includes four casters** for maneuverability and total portability
- **Remote Control is programmable from 1 to 99 minutes** to collect dust even while you are away from your workshop

STOCK NUMBER	708639	708639RC	708626CK	708626RCK
Model	DC-1100A	DC-1100RC	DC-1100CK	DC-1100RCK
Remote Control	no	yes	no	yes
Blower Wheel diameter (in.)	11	11	11	11
Sound Rating @ 3 ft.	70-80 dB	70-80 dB	70-80 dB	70-80 dB
1-Hose Connection dia. (in.)	6	6	6	6
2-Hose Connection dia. (in.)	4	4	4	4
Bag Diameter (in.)	20	20	20	20
Filter Bag/Canister length (in.)	46	46	26	26
Collection Bag length (in.)	30	30	30	30
Collection Bag Capacity	7.36 cu. ft.	7.36 cu. ft.	7.36 cu. ft.	7.36 cu. ft.
Air Flow @ 4" (CFM)	1,100	1,100	1,100	1,100
Particle Size	30-Micron	30-Micron	2-Micron	2-Micron
Static Pressure (in. of water)	11.5	11.5	11.5	11.5
Velocity @ 4" (FPM)	12,571	12,571	12,571	12,571
Overall dimensions (LxWxH/in.)	37x20x79	37x20x79	37x20x72	37x20x72
Motor (TEFC)	1-1/2HP, 1Ph, 115/230V, Prewired 115V	1-1/2HP, 1Ph, 115/230V, Prewired 115V	1-1/2HP, 1Ph, 115/230V, Prewired 115V	1-1/2HP, 1Ph, 115/230V, Prewired 115V
Net Wt. (lbs.)	115	115	120	120

OPTIONAL ACCESSORIES See pages 55-63 for details





JET MODEL 650 DUST COLLECTORS

- **Hook up one to three machines** for optimum dust cleaning
- **Quick-install collection bag** makes emptying and re-attaching a snap
- **Includes four casters** for maneuverability and total portability
- **Remote Control is programmable from 1 to 99 minutes** to collect dust even while you are away from your workshop



STOCK NUMBER	708640	708640RC	708640CK	708641RC
Model Number	DC-650A	DC-640RC	DC-650CK	DC-650RC
Remote Control	no	yes	no	yes
Blower wheel diameter (in.)	9-1/2	9-1/2	9-1/2	9-1/2
Sound Rating @ 3 ft.	60-dB	60-dB	60-dB	60-dB
1-Hose connection diameter (in.)	4	4	4	4
Bag diameter (in.)	14	14	14	14
Filter Bag/Canister length (in.)	31	31	24	24
Collection Bag length (in.)	23-5/8	23-5/8	24	24
Collection Bag capacity	2.67 cu. ft.	2.67 cu. ft.	2.7 cu. ft.	2.7 cu. ft.
Air Flow @ 4" (CFM)	650	650	650	650
Particle Size	30-micron	30-micron	2-micron	2-micron
Static Pressure (in. of water)	7.80	7.80	7.80	7.80
Velocity @ 4" (FPM)	7,445	7,445	7,445	7,445
Overall dimensions (L x W x H/in.)	27 x 14 x 66	27 x 14 x 66	27 x 14 x 61	27 x 14 x 61
Motor (TEFC)	1HP, 1Ph, 115/230V, Prewired 115V	1HP, 1Ph, 115/230V, Prewired 115V	1HP, 1Ph, 115/230V, Prewired 115V	1HP, 1Ph, 115/230V, Prewired 115V
Net weight (lbs.)	84	84	86	86

OPTIONAL ACCESSORIES See pages 55-63 for details



Replacement Filter Bag 708695 | Replacement Collection Bag 708697 | 5-Micron Collection Bag 708701 | Plastic Collection Bag 709565 | 2-Micron Canister Filter 708737 | Dust Collection Book JW1050 | Remote Control Unit for 115V 708650 | Remote Control Unit for 230V 708651



Our systems provide maximum air filtration to provide you with a cleaner, healthier shop environment. They should be used as a complement to dust collection equipment to trap the airborne dust particles generated during normal milling and sanding projects. These systems quietly clean and filter 98% of all 5-micron particles and 85% of all 1-micron particles while you work.

Which air filtration system do I need?

You should choose your system based on how your workshop is used. In general, a part-time use hobby shop should need six full air cycles per hour while a full-time, professional workshop would need eight full air cycles per hour for adequate air filtration. Use the following formula as a guide to determine the appropriate size unit (in CFM) for your shop:

1. Calculate shop volume in cubic feet (use 12' as maximum ceiling height)
2. Multiply cubic volume by the recommended cycles per hour to determine cubic feet per hour (CFH)
3. Divide CFH by 60 minutes to determine the optimum collector CFM capacity, for example:
 - a. Shop Volume: 20' x 20' x 8' = 3200 cu. ft.
 - b. 3200 cu. ft. x 6 cycles = 19,200 cu. ft./hour
 - c. 19,200 ÷ 60 = 320 cu. ft./min. (CFM)
 In larger shops, you may install several smaller units equally distant from one another to achieve the best air filtration result.



JET® AIR FILTRATION SYSTEMS

- **Disposable Electrostatic Outer Filter** attracts more dust particles than standard filters
- **Inner Pocket Filter** is removable for blowing clean or washing out with ease
- **Remote Control (with AFS-1000B only)** has built-in timer with 2, 4 and 8-hour settings; automatically shuts system off at the end of the time setting
- **Easy Grip Handles** allow easy portability of units
- **Four Eye Bolts (with AFS-1000B only)** let you hang unit from shop ceiling
- **Rubber Feet** prevent marring of surface when placed on workbench

OPTIONAL ACCESSORIES



Charcoal Filter for AFS-1000B 708734 | Electrostatic Outer Filter for AFS-1000B 708732 | Inner Filter for AFS-1000B 708733 | Inner Filter for AFS-500 708735

STOCK NUMBER	708613	708620B
Model	AFS-500	AFS-1000B
Speeds (CFM)	283, 333, and 440	550, 702, and 1044
Filter Cycle (min.)	7	4.92
Cycles per hour (20' x 20' x 8')	8.5	12.2
Timer Settings (hours)	n/a	2, 4, and 8
Outer Filter	5-micron	5-micron
Inner Filter	1-micron	1-micron
Overall Dimensions (L x W x H/in.)	15-1/4 x 24-1/8 x 12-1/8	30-1/4 x 24 x 12
Motor	1/12HP, 115V	1/6HP, 115V
Net Weight (lbs.)	33	54



5
YEAR
WARRANTY

JET HEAVY-DUTY FILTRATION SYSTEMS

- **Three-Filter System with Air Diffuser**
disperses outgoing air into a broader pattern
- **Disposable Electrostatic Outer Filter**
attracts more dust particles than standard filters
- **Inner 8-Pocket Filter**
is removable for blowing clean or washing out with ease
- **Adjustable Exhaust**
directs the air where you want it for optimal circulation
- **Fully-Enclosed Ball Bearing Motor with Overload Protection**
for long, dependable service
- **Remote Control**
has built-in timer with 2, 4 and 8-hour settings; automatically shuts system off at the end of the time setting
- **Four Eye Bolts**
let you hang unit from shop ceiling; all hardware included
- **Rubber Feet**
prevent marring of surface when placed on workbench

STOCK NUMBER	708614	708615
Model	AFS-1500	AFS-2000
Speeds (CFM)	750, 900, and 1300	800, 1200, and 1700
Filter Cycle (min.)	2.46	1.88
Cycles per hour (20' x 20' x 8')	24.39	31.91
Timer Settings (hours)	2, 4 and 8	2, 4 and 8
Outer Filter	5-micron	5-micron
Inner Filter	1-micron	1-micron
Overall Dimensions (L x W x H/in.)	32-1/4 x 20 x 16	44 x 26 x 22
Motor	1/4HP, 115V	1/3HP, 115V
Net Weight (lbs.)	75	110

OPTIONAL ACCESSORIES



Inner Filter 708726 (for AFS-1500) 708723 (for AFS-2000)
Outer Electrostatic Filter 708727 (for AFS-1500) 708722 (for AFS-2000)
Charcoal Filter 708728 (for AFS-1500) 708721 (for AFS-2000)
Washable Outer Filter 708729 (for AFS-1500) 708724 (for AFS-2000)
Replacement Remote Control 708711

TWO STAGE DUST COLLECTOR

- **1HP TEFC motor**
moves a high velocity of air for fast dust collection
- **Separator lids**
fit onto any 30 gallon steel or 32, 40, or 44 gallon plastic garbage can; no need to purchase a special collection can
- **Unique canister filter**
captures remaining sawdust down to 2-microns

STOCK NUMBER	708630
Model	DC-650TS
Blower Wheel diameter (in.)	9-1/2
Sound Rating @ 3 ft.	60-70 dB
Hose Connection dia. (in.)	4
Air Flow @ 4 in. (CFM)	650
Static Pressure (in. of water)	7.80
Velocity @ 4 in. (FPM)	7445
Overall Dimensions (dia. x H/in.)	22 x 16
Motor (TEFC)	1HP, 1Ph, 115V
Net Weight (lbs.)	38



2-STAGE DUST COLLECTION HOOD

- **Cyclonic action**
lets larger particles drop into the collection can for easy disposal
- **Fits most standard garbage cans**
so you don't have to purchase a special collection can
- **4" diameter inlet and outlet holes**
accept standard flex hose

STOCK NUMBER JW1049



REPLACEMENT BAGS FOR DUST COLLECTORS

- **Filter Bags**
- **Collection Bags**

STOCK NO.	DESCRIPTION	FOR MODEL NUMBER
708695	Filter Bag	DC-650
709562	Tall Filter Bag	DC-1100
708698	Filter Bag	DC-1200
708697	Collection Bag	DC-650
708699	Collection Bag	DC-1200+



5-MICRON FILTER BAGS

These bags are especially effective for sanding and other applications that produce fine dust.

STOCK NO.	DESCRIPTION
708701	DC-650 5-Micron Bag
708706	DC-1100 5-Micron Bag
708702	DC-1200 5-Micron Bag
708703	DC-1900+ 5-Micron Bag



CANISTER FILTERS AND REPLACEMENT BAGS

Unique V-weave design provides more filtering area than standard filter bags.

To clean the canister filter, just turn the top-rounded handle to rotate an internal cleaning flapper. The flapper then shakes filtered dust into the collection bag where it belongs; not in the air!

The exclusive design of the JET® canister filter lets you filter dust 15 times smaller than standard filters.

STOCK NO.	DESCRIPTION
708737	DC-CS, Canister Filter for DC-650
708739	DC-C, Canister Filter for Large Dust Collectors
708739R	20" Housing Retro Kit for DC-1100
708739K	20" Housing Retro Kit with Canister for DC-1100
709565	Clear Plastic 14" Dia. Collection Bag (set of 5)
709563	Clear Plastic 20" Dia. Collection Bag (set of 5)



DUST COLLECTION HOW-TO HANDBOOK



STOCK NO.	DESCRIPTION
JW1050	Dust Collection Handbook

A "must have" for anyone interested in setting up a dust collection or air filtration system, this book is packed with photos and illustrations showing system design, construction and grounding. Whether you're a hobbyist with a small woodshop or a professional with a shop full of woodworking machinery, this book will help you set up your collection system with confidence.

ABS PLASTIC BLAST GATES



STOCK NO.	SIZE (IN.)
JW1006	3
JW1007	4
JW1008	5
JW1009	6

Blast gates regulate the airflow to a given machine and may be used with metal or plastic ductwork. Two degrees tapered fit provides easy hook-up.

ALUMINUM BLAST GATES



STOCK NO.	SIZE (IN.)
JW1141	3
JW1142	4

Blast gates regulate the airflow to a given machine and may be used with metal or plastic ductwork. Features sturdy aluminum body, steel gate and locking knob.

"Y" FITTINGS



STOCK NO.	SIZE (IN.)
JW1014	3
JW1015	4

Fittings are used for branching off main lines where design limitations will not allow use of a "Y" fitting. They are slightly undersized to fit inside a hose.

"T" FITTINGS



STOCK NO.	SIZE (IN.)
JW1012	3
JW1013	4

Fittings are used for branching off main lines where design limitations will not allow use of a "Y" fitting. They are slightly undersized to fit inside a hose.

ELBOWS



STOCK NO.	SIZE (IN.)
JW1016	3
JW1017	4

Elbows are necessary when ductwork changes direction. These are slightly undersized to fit inside the hose and have a one degree tapered fit for easy hook-up.

REDUCERS

Reducers allow you to step down from a larger size to increase air velocity where you need it most. Their versatility lets you adapt them to many machines.

STOCK NO.	SIZE (OD/IN.)
JW1000	4 to 2-1/4 (2" ID)
JW1020	3 to 2
JW1041	3 to 2-1/2
JW1044	4 to 2-1/2
JW1011	4 to 3
JW1046	2-1/2 to 1-1/2
JW1037	5 to 4
JW1046	1-1/2 to 2-1/2



4" QUICK DISCONNECTS

These provide a quick hook-up between dust hoods and flexible hose and are ideal for use with mobile dust collectors. Available in either smooth or spiral style.

STOCK NO.	SIZE (IN.)
JW1038	4 Smooth
JW1047	4 Spiral



UNIVERSAL DUST PORT

2-1/2" outside diameter connects to hose, including ShopVac®. 4-1/2" tall x 4-1/4" wide overall.

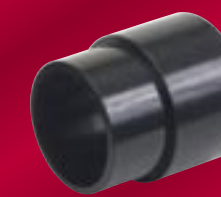
STOCK NO.	SIZE (IN.)
JW1042	2-1/2



VACUUM ADAPTERS

Completes your dust collection hook-up by allowing you to hook up small shop vacuums or use your shop system on small tools.

STOCK NO.	SIZE (IN.)
JW1048	1-1/2 to 2-1/2
JW1045	2-3/8 to 2-3/4



MULTIPLE STEP ADAPTER

Seven steps (1", 2", 2-1/2", 3", 4", 5", 6") let you adapt to various hook-ups. Simply cut to size with a hacksaw.

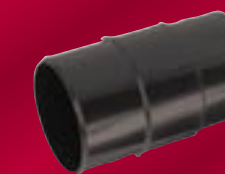
STOCK NO.	DESCRIPTION
JW1039	Multiple Step Adapter



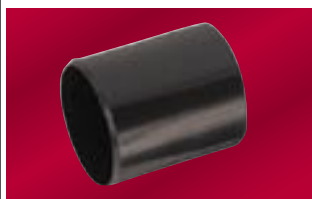
SPLICES

Splices are used for connecting flexible hose to create longer lengths. These are slightly undersized to fit inside hose.

STOCK NO.	SIZE (IN.)
JW1018	3
JW1019	4



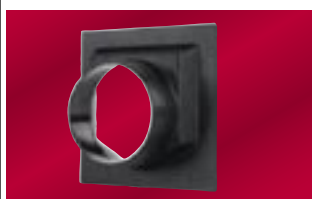
CONNECTOR SLEEVES



STOCK NO.	SIZE (IN.)
JW1040	3
JW1043	4

Sleeves are used to connect dust hoods to machines and hose.

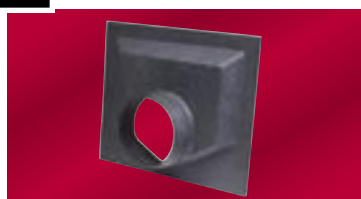
UNIVERSAL DUST HOOD



STOCK NO.	DESCRIPTION
JW1010	Universal Dust Hood

Outlet has a 4" outside diameter; 3/4" mounting flange. Overall measures 6-1/4" long x 6-1/4" wide. Easily attaches with screws or double-sided tape.

JOINTER DUST HOODS



STOCK NO.	LENGTH (IN.)	WIDTH (IN.)
JW1001	6-1/2	8-1/4
JW1002	8-1/2	10-1/4

Designed to fit most jointer stands, outlet has a 4" outside diameter; 3/4" mounting flange. It easily attaches with screws and is best used in conjunction with flexible hose.

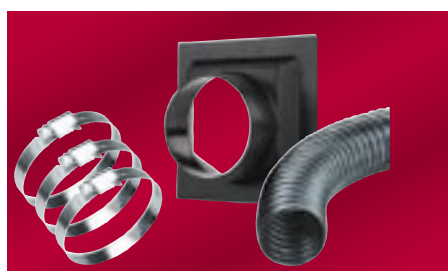
TABLESAW DUST HOODS



STOCK NO.	LENGTH (IN.)	WIDTH (IN.)
JW1004	12-1/4	12-1/4
JW1005	14	14

Designed to fit most 8", 10" and 12" contractor-style table saws, outlet has a 4" outside diameter; 3/4" wide mounting flange. It is best used in conjunction with flexible hose.

STANDARD 4" DIAMETER DUST COLLECTION KIT—ONE MACHINE HOOKUP



STOCK NO.	DESCRIPTION
JW1054	One Machine Dust Collection Kit

This basic kit will get you started on your way to a complete shop dust collection set-up. Includes one 4" x 10' hose; one universal dust hood; and three 4" hose clamps.

STANDARD 4" DIAMETER DUST COLLECTION KIT—TWO MACHINE HOOKUP



STOCK NO.	DESCRIPTION
JW1055	Two Machine Dust Collection Kit

This kit includes everything you need to hook up two machines to a dust collector. Add another kits or specific fittings and hose to fully customize your kit. Includes two 4" x 10' hose; two 4" blast gates; one table saw dust hood; one universal dust hood; one 4" "Y" fitting; and ten 4" hose clamps.

CAUTION
All plastic fittings and hoses must be grounded against static electrical build-up

FLOOR SWEEP

Designed specifically for home shop use, here is an inexpensive solution for your floor cleanup. Outlet is 4" outside diameter; overall dimensions are 3-5/8" H x 6-3/4" D x 24" W.

STOCK NO.	DESCRIPTION
JW1003	Floor Sweep



BLACK DUST COLLECTION HOSES

This tough, polyethylene flexible hose, designed specially for dust collection, can be used as either a main or a branch line. It is ideal for machine hook-up.

STOCK NO.	DIAMETER (IN.)	LENGTH (FT.)
JW1026	2	10
JW1027	2-1/2	10
JW1028	3	10
JW1029	3	20
JW1030	3	50
JW1031	4	10
JW1032	4	20
JW1033	5	10



CLEAR DUST COLLECTION HOSES

Tough, polyethylene abrasion-resistant flexible hose, designed specially for dust collection, can be used as either a main or branch line. It is ideal for machine hook-up.

STOCK NO.	DIAMETER (IN.)	LENGTH (FT.)
JW2026	2	10
JW2027	2-1/2	10
JW2028	3	10
JW2029	3	20
JW2031	4	10
JW2032	4	20
JW2033	5	10



CLEAR WIRE REINFORCED HOSES

Heavy-duty, wire-reinforced flexible hose, designed specially for dust collection, can be used as either a main or branch line. It is ideal for machine hook-up.

STOCK NO.	DIAMETER (IN.)	LENGTH (FT.)
JW1034	4	10
JW1035	5	10
JW1036	6	10



WIRE HOSE CLAMPS

STOCK NO.	SIZE (IN.)
JW1315	2
JW1314	2-1/2
JW1316	3
JW1317	4
JW1318	5
JW1319	6



HOSE CLAMPS

STOCK NO.	SIZE (IN.)
JW1025	2
JW1313	2-1/2
JW1021	3
JW1022	4
JW1023	5
JW1024	6



HOSE HANGERS **NEW**

These hangers hold different diameters of hose in place and out of the way. May be mounted on ceilings, walls or floors.



STOCK NO.	DIA. (IN.)
JW1125	2-5/16
JW1126	2-3/4
JW1127	3-1/4
JW1128	4-1/4
JW1129	5-1/4

GROUNDING KIT

This kit grounds your system against potentially dangerous electrical charge build-up. Includes 50' of copper wire; eight wire nuts; two grounding screws; and two wire connectors.

STOCK NO.	DESCRIPTION
JW1053	Grounding Kit





INDUSTRIAL-DUTY "QUICK SNAP" FITTINGS AND PIPE

JET industrial-duty metal dust collection pipe and fittings are equipped with our "Quick Snap" feature which connects pipe and fittings using a cam-over design. They simply lock in place and have a rubber seal to make your connections airtight. There is no need for metal screws, duct tape, sealant or any tools!

All of our industrial duty pipe and fittings are manufactured from 20-gauge steel for added strength and durability.

Steel ducting also protects your dust collection system from potentially dangerous static electrical charge.

These fittings and ducting are designed specially for dust collection. You can customize your system to your needs by adding cleanouts, floor sweeps and other sections. Contact your nearest JET dealer for more details and ordering information.

5-FOOT STRAIGHT DUCTING

Strong 20-gauge steel ducting with rolled end for the "Snap Clamp" and smooth walls for increased efficiency.

STOCK NO.	SIZE (DIA./IN.)
JW2000	4
JW2001	5
JW2002	6

ADJUSTABLE PIPE SLEEVES

Strong 20-gauge steel with rolled ends for the "Snap Clamp" and smooth walls for increased efficiency. 30" total length is adjustable to 26". No cutting required.

STOCK NO.	SIZE (DIA./IN.)
JW2003	4
JW2004	5
JW2005	6

45-DEGREE ELBOWS

Strong 20-gauge steel elbows have long length for greater efficiency and better airflow.

STOCK NO.	SIZE (DIA./IN.)
JW2010	4
JW2012	5
JW2014	6

90-DEGREE ELBOWS

Strong 20-gauge steel elbows have a large radius for greater efficiency and better airflow.

STOCK NO.	SIZE (DIA./IN.)
JW2009	4
JW2011	5
JW2013	6

LARGE RADIUS ELBOWS

Strong 20-gauge steel elbows have an extra-large radius for optimum efficiency and premium airflow.

STOCK NO.	SIZE (DIA./IN.)
JW2061	4
JW2062	5
JW2063	6

BRANCH FITTINGS

Strong 20-gauge steel fittings are ideal for dropping a line down from your ceiling. Feature a 45° branch angle.

STOCK NO.	SIZE (DIA./IN.)
JW2015	4
JW2017	5
JW2019	6



DOUBLE BRANCH FITTINGS

Strong 20-gauge steel fittings are designed for splitting to different machine centers. Feature a 30° branch angle.

STOCK NO.	SIZE (DIA./IN.)
JW2049	4
JW2050	5
JW2051	6



"Y" FITTINGS

Strong 20-gauge steel fittings are designed for splitting a line equally. Feature a 45° branch angle.

STOCK NO.	SIZE (DIA./IN.)
JW2021	4
JW2022	5
JW2023	6



"T" FITTINGS

Strong 20-gauge steel fittings are designed for routing ductwork around obstacles and along walls. Feature a 90° branch angle.

STOCK NO.	SIZE (DIA./IN.)
JW2016	4
JW2018	5
JW2020	6



SPECIALIZED "T" FITTINGS

Strong 20-gauge steel fittings reduce the size from the main line to the branch and are designed for routing ductwork around obstacles and along walls. Feature a 90° branch angle.

STOCK NO.	SIZE (DIA./IN.)
JW2059	5 to 4
JW2060	6 to 5



BLAST GATES

Strong 20-gauge steel gates are designed to control the airflow from the dust collector to the machine.

STOCK NO.	SIZE (DIA./IN.)
JW2024	4
JW2025	5
JW2055	6



MACHINE ADAPTERS

Strong 20-gauge steel adapters are designed to attach directly to machines convert them to the JET "Quick-Snap" system.

STOCK NO.	SIZE (DIA./IN.)
JW2030	4
JW2056	5
JW2057	6

STANDARD REDUCERS

Strong 20-gauge steel has two-rolled edges for the "Snap Clamp". Fitting is designed to reduce the diameter of the main or branch line.

STOCK NO.	SIZE (DIA./IN.)
JW2037	5 to 4
JW2038	6 to 5

STRAIGHT END REDUCERS

Strong 20-gauge steel has one rolled edge for the "Snap Clamp" and one plain end for attaching flexible hose. Fitting is designed to reduce the diameter of the main or branch line.

STOCK NO.	SIZE (DIA./IN.)
JW2058	4 Round to 3 Straight
JW2034	5 Round to 4 Straight
JW2035	6 Straight to 5 Round
JW2036	6 Straight to 5 Round

PIPE SADDLES

Saddles fit around the outside of steel pipe and are designed for attaching ducting to walls and ceilings.

STOCK NO.	SIZE (DIA./IN.)
JW2052	4
JW2053	5
JW2054	6

O-RINGS

O-Rings work with adjustable sleeves and are designed to be used with "Snap Clamps".

STOCK NO.	SIZE (DIA./IN.)
JW2006	4
JW2007	5
JW2008	6

QUICK SNAP CLAMPS

These stainless steel clamps act as O-ring seals. Guaranteed to close or we'll replace them for FREE.

STOCK NO.	SIZE (DIA./IN.)
JW2046	4
JW2047	5
JW2048	6

FLOOR SWEEP

Sweep seals up tight to help keep your shop clean and neat.

STOCK NO.	SIZE (DIA./IN.)
JW2039	4
JW2040	5
JW2041	6

KWICK GRIP WIRE HANGERS

Sturdy hanger has a 150 pound working load capacity and is designed for hanging ducting from ceilings, beams or other supports. Includes 15 feet of 2mm cable and wire connector.

STOCK NO.	LENGTH (FT.)
JW2045	15

END CAPS

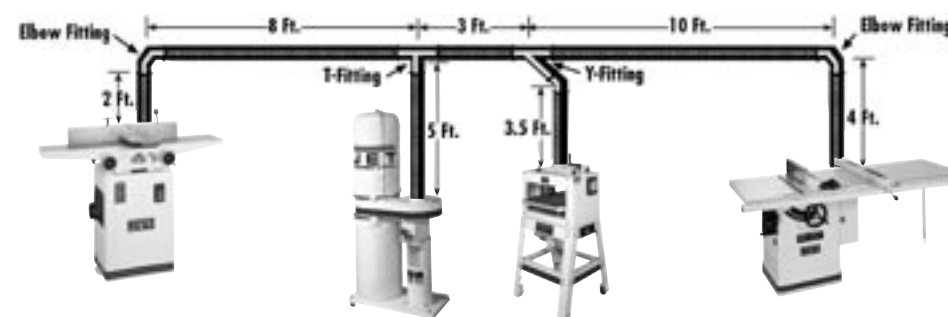
Strong 20-gauge steel caps are ideal for use as cleanouts.

STOCK NO.	SIZE (DIA./IN.)
JW2042	4
JW2043	5
JW2044	6

HOW TO LAYOUT YOUR SHOP

Before you purchase a dust collector, you should first layout a system, determine how many and what kind of tools will be connected to the system, and where they will be in relation to the dust collector. Once you have done your layout, with a few simple

calculations you can determine what size dust collector best suits your needs based on capacity in CFM, (Cubic Feet per Minute of air flow), and Static Pressure Loss.



MACHINE	CFM REQUIRED
12" Planer	350
13"+ Planer	400
Shaper	400
Bandsaw	400
Radial Arm Saw	350
Tablesaw	350
Disc Sander	300
Belt Sander	300
Floor Sweep	350
Jointer	350
Drill Press	300
Scroll Saw	300

The example above illustrates a simple three machine layout. In laying out your shop, try to follow these basic guidelines:

- Place machines requiring the highest CFM, (air flow in cubic feet per minute), closest to the dust collector (see chart).
- Try to keep runs as short as possible.
- Try to keep all duct work at the same height level as the dust ports on the machines.
- Try to keep directional change fittings, (T's and Y's and Elbows) to a minimum.

NOTE: We recommend installing a blast gate (page 56) for every tool to help direct all of the air flow to the tool being used.

